



# **U.S. SAWS™**

**BUILT FOR PROFESSIONALS**

## **MAGNETIC LIFTING PRODUCT CATALOG**

1-866-987-7297 | [www.USSAWS.com](http://www.USSAWS.com) | [sales@ussaws.com](mailto:sales@ussaws.com)

# U.S.SAWS MAGNETIC MANHOLE LIFTING LINE



U.S.SAWS Magnetic Lifting Systems are versatile tools that provide a safe way to lift utility covers.

- Dollies are collapsible for storage & transportation
- Dual-position lifting points to provide the power to break loose the most stubborn maintenance hole covers
- Eliminates the use of pry bars
- Moves utility hole covers up to 36 inches in diameter
- Uses rare neodymium magnets that won't wear out
- Reduces common injuries



## CURVED ALUMINUM HEAVY DUTY DOLLY WITH 8" HARD WHEELS

**PART NO. US30185 (WITH HEAVY DUTY MAGNET)**

*Recommended for covers up to 300 lbs*

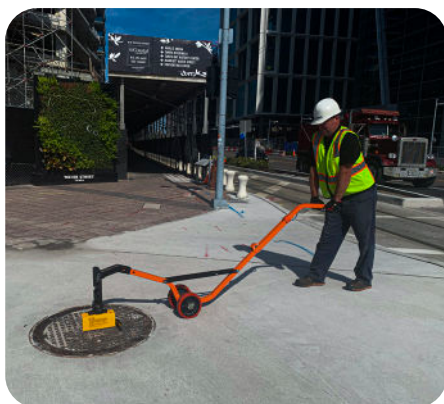
**PART NO. US30186 (WITH SUPREME DUTY MAGNET)**

*Recommended for covers up to 600 lbs*



Aluminum Heavy Duty Collapsible Dolly with 8" Hard Wheels, Heavy Duty Magnet or Supreme Duty Magnet

36" x 12 1/2" x 11-5/8" (Folded Dimension)



## CURVED STEEL HEAVY DUTY DOLLY WITH 8" HARD WHEELS

**PART NO. US30550 (WITH HEAVY DUTY MAGNET)**

*Recommended for covers up to 300 lbs*

**PART NO. US30200 (WITH MEGA DUTY MAGNET)**

*Recommended for covers up to 900 lbs*



Curved Heavy Duty Collapsible Steel Dolly with 8" Hard Wheels, Heavy Duty Magnet or Mega Duty Magnet

36" x 12 1/2" x 11-5/8" (Folded Dimension)



## SUPREME HEAVY DUTY DOLLY WITH 10" HARD WHEELS

**PART NO. US30160 (WITH SUPREME DUTY MAGNET)**

*Recommended for covers up to 600 lbs*

**PART NO. US30170 (WITH MEGA DUTY MAGNET)**

*Recommended for covers up to 900 lbs*



Supreme Heavy Duty Dolly with 10" Hard Wheels, Extension Handles, Supreme Duty Magnet or Mega Duty Magnet

48.5" x 16" x 11.5" (Folded Dimension)





# HAND - HELD MAGNETIC LIFTING:

## FEATURES:

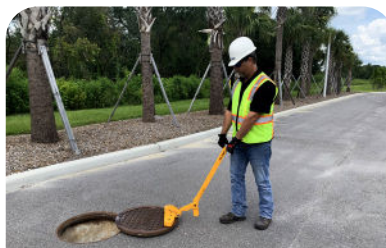
- Uses rare neodymium magnets that won't wear out
- Impact protection guards around the magnets
- Durable aluminium handle assemblies
- Storage base protects magnets during transportation
- Small enough to fit in any truck
- Affordable, durable, and portable



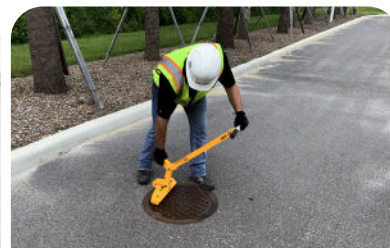
1. ATTACH



2. BREAK



3. REMOVE



4. REPLACE & RELEASE



### 3 OR 4 MAGNET ROBOTRON PART NO. US30178RT (3 MAGNET) PART NO. US30188RT (4 MAGNET)

Lifting Capacity	250 lbs/ 300 lbs
Magnets Used	3 Magnet/ 4 Magnet
Aluminium Chassis	Yellow
Unit Weight	14 lbs/ 16 lbs
Base Dimensions	13" x 6"/ 16" x 7"
Unit Height	34"



### 4 MAGNET UTILITY ROBOTRON PART NO. US30188UTILITY

Lifting Capacity	325 lbs
Magnets Used	4 Magnet
Aluminium Chassis	Yellow
Unit Weight	28 lbs
Base Dimensions	16" x 7"
Unit Height	42"



### 3 OR 4 MAGNET BREAK N'TAKE PART NO. US30178 (3 MAGNET) PART NO. US30188 (4 MAGNET)

Lifting Capacity	150 lbs/ 225 lbs
Magnets Used	3 Magnet/ 4 Magnet
Aluminium Chassis	Orange
Unit Weight	15 lbs/ 18 lbs
Base Dimensions	10" x 5"
Unit Height	34"



### 5 MAGNET BREAK N' TAKE PART NO. US30198

Lifting Capacity	350 lbs
Magnets Used	5 Magnet
Aluminium Chassis	Orange
Unit Weight	26 lbs
Base Dimensions	16" x 7"
Unit Height	34"



### BO BOP VALVE BOX LIFTER PART NO. US30298 PART NO. US30299 (NON-SPARKING)

Lifting Capacity	25 lbs
Magnets Used	1 Magnet
Aluminium Chassis	Orange
Unit Weight	4 lbs
Base Dimensions	4" x 2"
Unit Height	34"



### TRENCH PLATE MOVER PART NO. US30297 (1 MAGNET) PART NO. US30293 (2 MAGNET)

Guide Capacity	50/150 lbs shear
Magnets Used	1 Magnet/ 2 Magnet
Aluminium Chassis	Orange
Unit Weight	8 lbs
Base Dimensions	5" x 5"
Unit Height	4" - 7"



## FEATURED ACCESSORIES:

### REPLACEMENT MAGNETS



#### HEAVY DUTY MAGNET

**300 lbs\***

PART NO: US30330

Holding Value (Flat/Round)  
660 lbs/330lbs



#### SUPREME DUTY MAGNET

**600lbs\***

PART NO: US30450

Holding Value (Flat/Round)  
900 lbs/450lbs



#### MEGA DUTY MAGNET

**900 lbs\***

PART NO: US30660

Holding Value (Flat/Round)  
1320 lbs/660lbs

### 42" MANHOLE BARRIER



PART NO: US35000

A lightweight, fully collapsible barrier that locks into the manhole lid, preventing it from falling over and providing maximum protection for the workforce and general public.

### ROBOTRON UTILITY HANDLE



PART NO. US30184UTILITY

Provides increased leverage for magnetic maintenance hole lifters.

### 10" PUNCTURE PROOF WHEEL KIT



PART NO. US30050

Provides increased footprint for use on soft ground  
(Not for use on aluminium dolly)

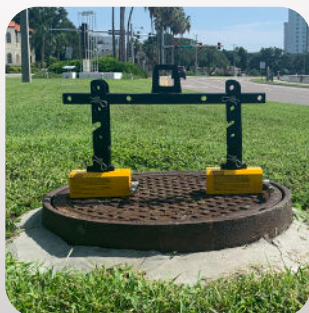
### LIFTING ARM EXTENSION



PART NO. US30117

Provides increased lifting leverage for manholes larger than 36"

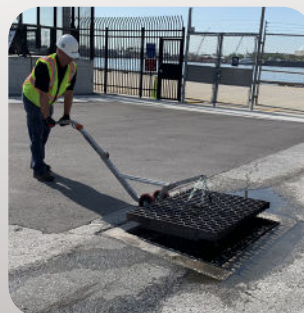
### ADJUSTABLE SPREADER BAR



PART NO. US30261

Allows 2 magnets to be used with a dolly at the same time for greater stability & lifting force

### STORM GRATE LIFTING CHAIN



PART NO. US30055

Centering loop & 3 hooks for easy lifting & moving of rectangular storm gates

# U.S.SAWS™

## WATER WORKS DIVISION

P: 866-987- 7297 F: 813-621-7125

Visit us at [www.ussaws.com](http://www.ussaws.com)

[sales@ussaws.com](mailto:sales@ussaws.com)

