

# U.S.SAWS™

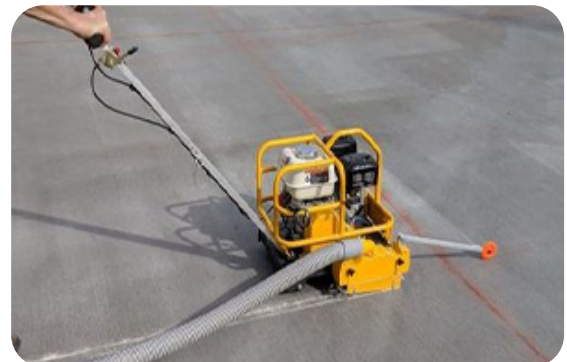
## U.S.SAWS SRX-150 Early Entry Saw



The U.S.SAWS SRX-150 is a compact, lightweight early entry saw designed to cut green concrete to control cracks. The saw is compact and lightweight, the SRX-150 series of dry cutting saws are engineered for early entry sawing of crack control joints within one to two hours of concrete finishing. The blade guard features a vacuum port to control dust when dry cutting.

### Features

- “Upcut” blade rotation facilitates keeping debris out of the joint
- Triangular shaped arbor
- Blade shaft with self-aligning bearings
- Vacuum port for easy connection to dust control systems
- Poly V-belt for positive power transmission
- 3-inch wide, polyurethane wheels for non-marking
- Skid plate minimizes joint chipping and spalling



| Model             | SRX-150                   |
|-------------------|---------------------------|
| Part Number       | SXSRX-150                 |
| Description       | Early Entry Saw           |
| Blade Size        | 6-3/8"                    |
| Max Cutting Depth | 1-1/8"                    |
| Arbor             | Triangular                |
| Engine            | Honda GX160               |
| Wheel             | 3" Wide Flat Polyurethane |
| Weight            | 88 lb                     |

