

# U.S.SAWS™

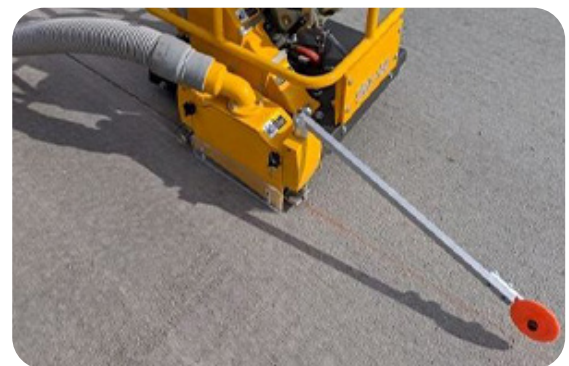
## U.S.SAWS SRX-150 Early Entry Saw



The U.S.SAWS SRX-150 is a compact, lightweight early entry saw designed to cut green concrete to control cracks. The saw is compact and lightweight, the SRX-150 series of dry cutting saws are engineered for early entry sawing of crack control joints within one to two hours of concrete finishing. The blade guard features a vacuum port to control dust when dry cutting.

### Features

- “Upcut” blade rotation facilitates keeping debris out of the joint
- Triangular shaped arbor
- Blade shaft with self-aligning bearings
- Vacuum port for easy connection to dust control systems
- Poly V-belt for positive power transmission
- 3-inch wide, polyurethane wheels for non-marking
- Skid plate minimizes joint chipping and spalling



Model	SRX-150
Part Number	SXSRX-150
Description	Early Entry Saw
Blade Size	6-3/8"
Max Cutting Depth	1-1/8"
Arbor	Triangular
Engine	Honda GX160
Wheel	3" Wide Flat Polyurethane
Weight	88 lb

