

# U.S.SAWS™

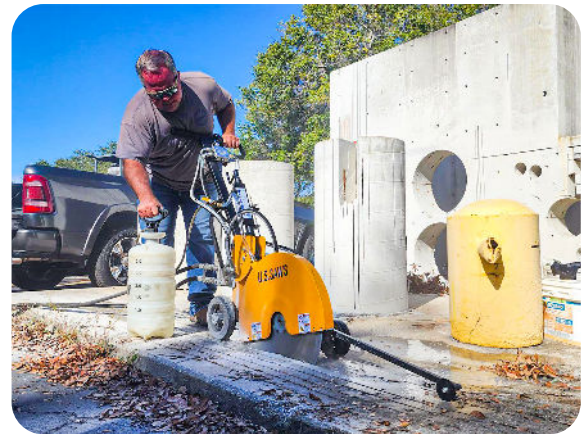
## FSB-150H WALK BEHIND SAW



U.S.SAWS FSB 150H Hydraulic Walk Behind Saw is perfect for concrete and asphalt cutting applications where large saws cannot be used. The heavy-duty frame design reduces vibration for a fast, accurate cutting. The compact size makes transportation easy because the tool has no exhaust fumes. It is ideal for use with interior applications, trench cutting, and restoration.

### Features:

- Cuts to 7.5 inches deep
- 1/2" flush face quick connect hydraulic fittings
- No belt to slip
- Weight precisely balanced eliminating rocking of saw
- Lightweight and reliable
- Fume free so can be used safely in confined spaces
- Able to operate in water
- Use with blades up to 20 inches in diameter



| Model                | FSB-150H                |
|----------------------|-------------------------|
| Power Source         | Hydraulic               |
| Horsepower           | 12 GPM / 2500 PSI       |
| RPM                  | 3,300                   |
| Max Cutting Depth    | 7.5"                    |
| Diameter Blades Used | 20" Maximum - Flush Cut |
| Weight               | 144 lbs                 |
| Part Number          | US60050-H               |

