



U.S. SAWS™

WATER WORKS DIVISION PRODUCT CATALOG 2022

PROFESSIONAL WATER WORKS EQUIPMENT



U.S.SAWS develops and manufactures innovative construction equipment used primarily in the Water and Sewer industry. U.S.SAWS carries a line of magnetic manhole lifting systems, diamond blades, valve exercisers, and bevelling attachments for cutting and bevelling plastic and ductile iron pipe, along with a full line of hand-held and walk-behind saws, are just some of the quality products U.S.SAWS offers to make your job easier and safer.

TABLE OF CONTENTS

**PREMIUM
DIAMOND BLADES**

PAGES 4 - 7

**UNDERGROUND
CUTTING**

PAGE 8-10

**CONSTRUCTION
TOOLS**

PAGES 11-12

VALVE EXERCISER

PAGE 13

**BATTERY POWERED
PUMP**

PAGES 14

**MAGNETIC LIFTING
SYSTEMS**

PAGES 15

**HAND-HELD
MAGNETIC LIFTING
SYSTEMS**

PAGES 16-18

PREMIUM DIAMOND BLADES

U.S.SAWS offers a variety of superior quality diamond blades for many different cutting applications such as concrete, asphalt, ductile iron, PVC pipe. All U.S.SAWS' blades have a performance guarantee for the life of the blade.



PIPE CUTTING BLADES



TIGER TOOTH OUR PREMIER DIAMOND PIPE CUTTING BLADE

Applications: Ductile Iron Pipe, Plastic Pipe, Cast Iron, Re-bar, Angle Iron, Threaded Rod, Reinforced Concrete Pipe*, Wood, Rescue Applications

Usage: Hand-held Saws & Chop Saws

APB04080	4x080x7/8-5/8
APB45080	4.5x080x7/8
APB07125D	7x125x7/8-5/8
APB08125D	9x125xUniversal Arbor
APB12125	12x125x1-20mm
APB14125	14x125x1-20mm
APB14125C	14x125x20mm**
APB16125	16x125x1-20mm

*Not recommended for concrete or asphalt applications. Shorter life expected

** 20mm Solid Bore (Only on APB14125C)



PIPE PIRANHA PIPE CUTTING BLADE

Applications: Ductile Iron Pipe, Plastic Pipe, Clay Pipe, Reinforced Concrete Pipe*

Usage: Hand-held Saws & Chop Saws

EPB12125	12x125x1-20mm
EPB14125	14x125x1-20mm
EPB14125C	14x125x5mmx20mm**
EPB16125	16x125x1-20mm

*Shorter life expected

** 20mm Solid Bore

See Page 6 for Performance Application Chart

PREMIUM DIAMOND BLADES

MULTIPURPOSE BLADES



PREMIUM DOS SEGGIE MULTIPURPOSE DIAMOND BLADE

Applications: Concrete, Reinforced Concrete Pipe, Cast Iron, Re-bar, Angle Iron, Threaded Rod, Asphalt*, Clay Pipe, Ductile Iron Pipe, Plastic Pipe

Usage: Hand-held Saws & Chop Saws

PXX12125	12x125x1-20mm
PXX14125	14x125x1-20mm
PXX14125C	14x125x20mm **
PXX16125	16x125x1-20mm

*Shorter life expected
** 20mm Solid Bore



JUMBO SEGMENT MULTIPURPOSE DIAMOND BLADE

Applications: Cured Concrete, Concrete Pipe, Brick, Block, Roof Tile

Usage: Hand-held Saws, Chop Saws & Walk-Behind Saws

JTS12125	12x125x1-20mm
JTS14125	14x125x1-20mm
JTS14125C	14x125x20mm**
JTS16125	16x125x1-20mm

** 20mm Solid Bore

SINGLE PURPOSE BLADES



MAJOR ASPHALT PREMIER DIAMOND BLADE FOR ASPHALT

Applications: Asphalt, Asphalt Over Concrete, Green Concrete

Usage: Hand-held Saws, Chop Saws, and Walk-Behind Saws

DAS12125	12x125x1-20mm
DAS14125	14x125x1-20mm
DAS14125C	14x125x20mm**
DAS16125	16x125x1-20mm
DAS18142	18x142x1-20mm

** 20mm Solid Bore



COLONEL CONCRETE PREMIER DIAMOND BLADE FOR CONCRETE

Applications: Cured Concrete, Concrete Pipe, Brick, Block

Usage: Hand-held Saws, Chop Saws, and Walk-Behind Saws

STA12125	12x125x1-20mm
STA14125	14x125x1-20mm
STA14125C	14x125x20mm**
STA16125	16x125x1-20mm
STA18135	18x135x1-20mm
STA20145	20x145x1-20mm

** 20mm Solid Bore

See Page 6 for Performance Application Chart

PREMIUM DIAMOND BLADES

GENERAL CUTTING BLADES



THE GENERAL GENERAL PURPOSE DIAMOND BLADE

Applications: Asphalt, Cured Concrete, Concrete Pipe, Brick, Block, Roof Tile

Usage: Hand-held Saws, Chop Saws & Walk-Behind Saws

GPS12125	12x125x1-20mm
GPS14125	14x125x1-20mm
GPS14125C	14x125x20mm **
GPS16125	16x125x1-20mm
GPS16125C	16x125x20mm **
GPS18142	18x142x1-20mm
GPS20142	20x142x1-20mm

* Shorter life expected

** 20mm Solid Bore



BLACK OPS GENERAL PURPOSE BLADE

Applications: Cured Concrete, Green Concrete, Pipe, Brick, Block, Roof Tile

Usage: Hand-held Saws & Chop Saws

LCS12125	12x125x1-20mm
LCS14125	14x125x1-20mm
LCS14125C	14x125x20mm**

** 20mm Solid Bore

U.S.SAWS™ PREMIUM DIAMOND BLADES PERFORMANCE APPLICATION CHART		MATERIAL																
		PLASTIC/PVC	DUCTILE IRON	METAL	STEEL	RCP	CONCRETE PIPE	HDPE	FIBERGLASS	CLAY	WOOD	REBAR	CAST IRON	THREADED ROD	ANGLE IRON	CONCRETE	REINFORCED CONCRETE	GREEN CONCRETE
BLADE NAME	TIGER TOOTH (APB)	GOOD	GOOD	GOOD	GOOD	GOOD	GOOD	GOOD	GOOD	GOOD	GOOD	GOOD	GOOD	GOOD	GOOD	GOOD	GOOD	GOOD
	PIPE PIRANHA (EPB)	GOOD	GOOD	GOOD	GOOD	GOOD	GOOD	GOOD	GOOD	GOOD	GOOD	GOOD	GOOD	GOOD	GOOD	GOOD	GOOD	GOOD
	PREMIUM DOS SEGGIE (PXX)	GOOD	GOOD	GOOD	GOOD	GOOD	GOOD	GOOD	GOOD	GOOD	GOOD	GOOD	GOOD	GOOD	GOOD	GOOD	GOOD	GOOD
	DOS SEGGIE (DXX)	GOOD	GOOD	GOOD	GOOD	GOOD	GOOD	GOOD	GOOD	GOOD	GOOD	GOOD	GOOD	GOOD	GOOD	GOOD	GOOD	GOOD
	COLONEL CONCRETE (STA)	GOOD	GOOD	GOOD	GOOD	GOOD	GOOD	GOOD	GOOD	GOOD	GOOD	GOOD	GOOD	GOOD	GOOD	GOOD	GOOD	GOOD
	MAJOR ASPHALT (DAS)	GOOD	GOOD	GOOD	GOOD	GOOD	GOOD	GOOD	GOOD	GOOD	GOOD	GOOD	GOOD	GOOD	GOOD	GOOD	GOOD	GOOD
	THE GENERAL (GPS)	GOOD	GOOD	GOOD	GOOD	GOOD	GOOD	GOOD	GOOD	GOOD	GOOD	GOOD	GOOD	GOOD	GOOD	GOOD	GOOD	GOOD
	ABRASIVE BLADE	GOOD	GOOD	GOOD	GOOD	GOOD	GOOD	GOOD	GOOD	GOOD	GOOD	GOOD	GOOD	GOOD	GOOD	GOOD	GOOD	GOOD
		BRICK	BLOCK	ASPHALT	GREEN CONCRETE	REINFORCED CONCRETE	ANGLE IRON	THREADED ROD	CAST IRON	REBAR	WOOD	CLAY	FIBERGLASS	HDPE	CONCRETE PIPE	RCP	STEEL	METAL

Performance Warranty • Smooth & Fast Cutting • Variety of Sizes & Type For Any Cutting Job

PROFESSIONAL DIAMOND BLADES

CURED CONCRETE & ASPHALT DIAMOND BLADES

Standard		Premium		Professional	
Size	Part No.	Size	Part No.	Size	Part No.
12x125x1	WCA12125S	12x125x1	WCA12125P	12x125x1	WCA12125U
12x250x1	WCA12250S	12x250x1	WCA12250P	12x250x1	WCA12250U
14x125x1	WCA14125S	14x125x1	WCA14125P	14x125x1	WCA14125U
14x250x1	WCA14250S	14x250x1	WCA14250P	14x250x1	WCA14250U
16x125x1	WCA16125S	16x125x1	WCA16125P	16x125x1	WCA16125U
18x125x1	WCA18125S	18x135x1	WCA18135P	18x135x1	WCA18135U
20x145x1	WCA20145S	20x135x1	WCA20135P	20x135x1	WCA20135U
24x160x1	WCA24160S	24x145x1	WCA24135P	24x145x1	WCA24135U
		26x145x1	WCA26145P	26x145x1	WCA26145U
		30x160x1	WCA30160P	30x160x1	WCA30160U
		36x160x1	WCA36160P	36x160x1	WCA36160U



Standard		Premium		Professional	
Size	Part No.	Size	Part No.	Size	Part No.
12x125x1	WAA12125S	12x125x1	WAA12125P	12x125x1	WAA12125U
12x250x1	WAA12250S	12x250x1	WAA12250P	12x250x1	WAA12250U
14x125x1	WAA14125S	14x125x1	WAA14125P	14x125x1	WAA14125U
14x250x1	WAA14250S	14x250x1	WAA14250P	14x250x1	WAA14250U
16x125x1	WAA16125S	16x125x1	WAA16125P	16x125x1	WAA16125U
18x125x1	WAA18145S	18x135x1	WAA18135P	18x135x1	WAA18135U
20x145x1	WAA20145S	20x135x1	WAA20135P	20x135x1	WAA20135U
24x160x1	WAA24160S	24x145x1	WAA24135P	24x145x1	WAA24135U
		26x145x1	WAA26145P	26x145x1	WAA26145U
		30x160x1	WAA30160P	30x160x1	WAA30160U
		36x160x1	WAA36160P	36x160x1	WAA36160U



ABRASIVE WHEELS

TIGER ABRASIVE COMBINATION BLADE

Combination Silicon Carbide / Aluminum Oxide Abrasive Wheel for Cutting Ductile Iron with a Universal Arbor for Use On All Saws

MN37843UA	14x1/8x20mm-1 Universal Arbor
MN37842UA	14x1/8x20mm-1 High-Speed Abrasive for Masonry (With Universal Arbor)



Application: Steel

Value	12x5/32x20mm Aluminium Oxide Wheel	12x5/32x1 Aluminium Oxide Wheel	14x5/32x20mm Aluminium Oxide Wheel	14x5/32x1 Aluminium Oxide Wheel	16x1/8x1 20mm Aluminium Oxide Wheel
	MA32126	MA32125	MA32146	MA32145	MN30886UA

Application: Masonry, Non-Ferrous, Asphalt

Value	12x5/32x20 Silicon Carbide Wheel	12x5/32x1 Silicon Carbide Wheel	14x5/32x20mm Silicon Carbide Wheel	14x5/32x1 Silicon Carbide Wheel
	MA37126	MA37125	MA37146	MA37145

Application: Ductile Iron

Value	12x5/32x20mm Combo Wheel	12x5/32x1 Combo Wheel	14x5/32x20mm Combo Wheel	14x5/32x1 Combo Wheel
	MA35126	MA35125	MA35146	MA35145

VALUE WHEEL (MA)



BLADE BUSHING FOR 20MM SAWS

PN: BUSH0120375 - DIAMOND BLADES

This adapter is a permanent and reusable bushing to reduce blade arbors from 1" to 20mm

UNDERGROUND CUTTING

BELLY SAW



The Belly Saw is designed for cutting pipe on all job-sites. The design of the saw is safer to operate than other cutting tools. The guard design completely covers the blade, and the saw straps to the pipe to prevent kick-back. The belly saw is available in air or hydraulic power. The tool uses the U.S.SAWS Tiger Tooth Blade for the best cutting results.



*16-18" PVC Maximum due to side wall thickness of pipe

AIR BELLY SAW

PART NUMBER: US60278

Model	8" to 24" Belly Saw
Power Source	Direct Drive Air Motor
Air Requirements	90 cfm @ 90 psi
RPM	6,000
Max Pipe Dia.	24" Ductile *(16-18" PVC)
Dia. Blades Used	8"
Max Blade Width	.125"
Strap Assembly	8"-24"
Dimensions	8.5"x21"x10.5"
Weight	30 lbs
Package Includes:	8" Blade, 24" Strap Assembly, and Storage Bag



*16-18" PVC Maximum due to side wall thickness of pipe

HYDRAULIC BELLY SAW

PART NUMBER: US60250

Model	Hydraulic Belly Saw
Power Source	Hydraulic (5 GPM)
RPM	5,000
Max Pipe Dia.	24" Ductile *(16-18" PVC)
Dia. Blades Used	8"
Max Blade Width	.125"
Strap Assembly	8"-24"
Dimensions	8.5"x21"x10.5"
Weight	33 lbs
Package Includes:	8" Blade, 24" Strap Assembly, and Storage Bag



BIG BELLY SAW - FOR LARGE PIPE

PART NUMBER: US60280 (48")

PART NUMBER: US60290 (72")

Model	Big Belly Saw
Power Source	Direct Drive Air Motor
Air Requirements	90 cfm @ 90 psi
RPM	5,250
Max Pipe Dia.	48" or 72" Ductile
Dia. Blades Used	12"
Max Blade Width	.125"
Strap Assembly	Up to 48" or 72"
Dimensions	10.5"x24"x12"
Weight	52 lbs
Package Includes:	12" Blade, 24" Strap Assembly, and Storage Bag

UNDERGROUND CUTTING

CHAINSAWS



The U.S.SAWS line of chainsaws provides a safe, accurate, and easy to use pipe cutting solution preferred by many water departments and underground contractors. Available in air, hydraulic, or gas-powered. A variety of bar and chain styles are available for pipe and concrete cutting applications.



AIR CHAIN SAW MODEL ACH-GB

PART NUMBER: US60466 (16")

PART NUMBER: US60502 (20")

This air-powered chain saw requires 90cfm of air at 90psi. The special PowerGrit chain allows the Model ACH-GB Air Powered Chain Saw to safely and quickly cut ductile iron, PVC, HDPE, and other similar materials.

Power Source	Gearbox Air Motor
Guide Bar	16" or 20"
Weight	36 lbs (With Bar and Chain)



GAS CHAIN SAW MODEL 695XL-16 F4

PART NUMBER: US71021

The ICS gas-powered chain saw is the highest horsepower chainsaw in the construction industry. Features include a Polyester air filter designed specifically for wet cutting. Available with 12"-16" guide bars, optional 20" bar with chain are available. Recommended use for general construction, utility contractors, and concrete professionals.

Power Source	2-Stroke Gas
Guide Bar	16"
Weight	33 lbs (With Bar and Chain)

CONCRETE CUTTING CHAINSAW



The concrete chainsaw provides the perfect combination of precision, productivity, and safety. The air-powered saw is more reliable than gas-powered saws and does not emit dangerous gas fumes—ideal for wet environments or indoor cutting.



AIR CHAIN SAW MODEL ACH-GB

PART NUMBER: US60465 (16")

PART NUMBER: US60503 (20")

This air-powered chain saw requires 90cfm of air at 90psi. The special ProFORCE diamond chain allows the Model ACH-GB Air Powered Chain Saw to safely and quickly cut concrete. It is ideal for applications requiring square corners without overlapping cuts.

Power Source	Gearbox Air Motor
Air Requirements	90 cfm @ 90 psi
Guide Bar	16" or 20"
Weight	36 lbs (With Bar and Chain)

UNDERGROUND CUTTING

CHAIN SAW ACCESSORIES



Reduce operator fatigue and makes safer bottom-up cuts.



Pipe Clamp with Mounting Axle

PART NUMBER: US60410 (air)

PART NUMBER: US60410G (gas)

Pipe Clamp Extension Chain

PART NUMBER: US60410-3



CHAINSAW CARRYING BAG

PART NUMBER: US60403



3.5 GALLON MANUAL PUMP WATER SUPPLY

PART NUMBER: US27810-1



5 GALLON BATTERY POWERED PUMP

PART NUMBER: US27815

HAND-HELD AIR SAWS



The U.S.SAWS hand-held, air-powered saws are an alternative to traditional gas-powered chop saws. Air-power is more reliable, longer-lasting, and emits no hazardous exhaust fumes. Ideal applications are confined space cutting, underground applications, or operation in interior space.



HS-125

PART NUMBER: US-HS125

Hand-Held Air Saw with Gearbox, Whip Hose, Built-In Oiler, and 14" Guard. The air saw cuts up to 5" deep. The pneumatic power source eliminates dangerous exhaust fumes.

Model

HS-125

Air Requirements

min. 90 cfm @ 90 psi

RPM

3,300

Max Cutting Depth

5"

Dia. Blade Used

14"

Weight

25 lbs



HS-150

PART NUMBER: US-HS150

Hand-Held Air Saw with Gearbox, Whip Hose, Built-In Oiler, and 18" Guard. The hand-held air saw cuts up to 7". The saw is environmentally friendly and a safe alternative to traditional gas-powered saws for cutting concrete and asphalt.

Model

HS-150

Air Requirements

min. 90 cfm @ 90 psi

RPM

3,300

Max Cutting Depth

7"

Dia. Blade Used

18"

Weight

28 lbs

CONSTRUCTION TOOLS

WALK-BEHIND SAWS



Our line of FSB 150 Walk-Behind Saws is an alternative to heavier gas-powered walk-behind saws. With a 7.50" depth of cut, many repair applications such as side walk repair, interior trench cutting or asphalt patching can easily be achieved. Ideal for municipalities and demolition contractors.



FSB-150 AIR SAW

PART NUMBER: US60050

OPTIONAL WATER TANK KIT

PART NUMBER: US60060

Model	FSB-150
Power Source	Gear Box
Air Requirements	min. 90 cfm @ 90 psi
RPM	3,300
Max. Cutting Depth	7.5"
Dia. Blades Used	20" Maximum
Weight	144 lbs

Package Includes: 20" Blade Capacity, Water Feed Kit, Whip Hose, Oiler, Wrenches & (1) Quart Ice Free Oil



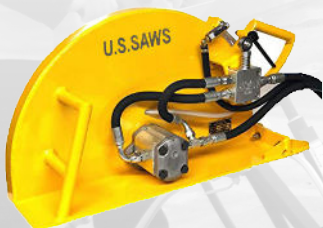
FSB-150H HYDRAULIC SAW

PART NUMBER: US60050-H

Model	FSB-150
Power Source	Hydraulic
Horsepower	12 GPM / 2500 PSI
RPM	3,300
Max. Cutting Depth	7.5"
Dia. Blades Used	20" Maximum
Weight	144 lbs

Package Includes: 20" Blade Capacity, Water Feed Kit and Wrenches

HAND-HELD HYDRAULIC SAWS



21" HAND-HELD HYDRAULIC SAW

PART NUMBER: US-HS210H

Model	21" Hydraulic Saw
Engine	Hydraulic
Horsepower	12 GPM/ 2500 PSI
Max. Blade Size	20"
Max. Cutting Depth	8"
Dia. Blades Used	20" Maximum
Weight	26 lbs



24" HAND-HELD HYDRAULIC SAW

PART NUMBER: US-HS240H

Model	24" Hydraulic Saw
Engine	Hydraulic
Horsepower	12 GPM/ 2500 PSI
Max. Blade Size	24"
Max. Cutting Depth	10"
Dia. Blades Used	20" Maximum
Weight	31 lbs

CONSTRUCTION TOOLS

PVC BEVELING TOOL - UNIVERSAL THREAD-ON BEVELER



Features:

- Easily attached to 5/8 -11 threaded right angle grinder
- Bevel 6" to 16" Pipe
- Quickly and effortlessly bevel PVC and other plastic pipes



16 FLUTE BEVELER

PART NUMBER: US24034

PVC BEVELING TOOLS - FOR CHOP SAWS



Features:

- Easy to install and easy to use, the best way to bevel plastic pipe
- A safer solution to beveling plastic pipe - in or out of the trench
- Models available to fit construction saws and 5/8-11 threaded grinders
- Models vary depending on the application and make of saw

Beveler Assemblies			
	Application, Cutter Type & Part No.		
	Large Diameter Pipe 16" and greater 3-Flute	MOST POPULAR 6" to 16" 8-Flute	SDR & PVC Pipe 6" - 16" 16-Flute
Saw Make			
Husqvarna 2018 or older Silver or Gold Flanges	US24040	US24060	US24050
Husqvarna 2019 or newer Black Flanges	US24036	US24066	US24056
STIHL	US24041	US24061	US24051
Right Angle Grinder	N/A	US24064	US24032

HAND-HELD PIPE BEVELERS



SEWER BUDDY ASSEMBLY PACKAGE

PART NUMBER: US26550

Package Includes: 20V DeWalt Grinder, 110V charger, 4.5" Tiger Tooth Blade, 16 Flute Beveler, (2) batteries, carrying case, and wrenches



BEVEL BUDDY ASSEMBLY PACKAGE

PART NUMBER: US26559

Package Includes: 20V DeWalt Grinder, 110V battery charger, (2) batteries, carry case and 16 Flute Beveler

VALVE EXERCISER

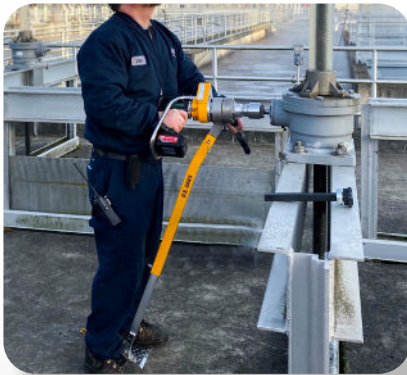


DELUXE VALVE EXERCISER PACKAGE

PART NUMBER: US75005

- Powerful, portable, battery-operated unit
- Roll cage provides added protection for the tool & operator
- Breaks down for easy transportation and storage in the provided bag/ hard case
- Torque multiplying gearbox
- Rotation counter for tracking of turns in either direction
- Extended run time
- The perfect alternative to large truck-mounted rigs

Power Source	Lithium Ion 18V Battery
Max Depth	48" / 108"
Torque	400 Peak ft/lbs
Weight	55 lbs



TREATMENT PLANT APPLICATION VALVE EXERCISER PACKAGE

PART NUMBER: US75060

The U.S.SAWS Treatment Plant Valve Exerciser is a powerful, portable, battery-operated unit designed to take away from labor-intensive hand-cranking in a water treatment plant.

Attachment Kit Includes: hydrant handle assembly, storage bag for legs & extensions, extendable and adjustable legs with a flat foot platform



HYDRANT PACKAGE

PART NUMBER: US75001

Hydrant Package is designed to open and close hydrants when flow testing, flushing work, and inspections are needed to be done. The Hydrant Package reduces the repetitive labor that comes with the opening or closing hydrants.

Hydrant Package Includes: power-head & carry case, padded torque handle, hydrant pentagon key, (2) 18V batteries, (1) leg and (1) foot platform

VALVE EXERCISER ACCESSORIES



HYDRANT ADAPTER

PART NUMBER: US75611

Designed to fit most pentagon style hydrant nuts



OS&Y ADAPTER (Outside Stem & Yoke)

PART NUMBER: US75608

Designed to fit post indicator and wheel valves. Includes 1 ft shaft extension



OS&Y DRIVE SOCKET

PART NUMBER: US75609

BATTERY POWERED PUMP

BP1520 - UTILITY PUMP

U.S.SAWS NEW and IMPROVED BP1520 is a fast pumping water pump designed to remove standing water from water meter pits, valve boxes, and other subterranean boxes that are difficult to drain. This device utilizes common drill batteries from several different brands including DeWalt 20 Volt and Milwaukee 20 Volt. The PVC body and housing will not rust, dent, bend or corrode. The slim design of the pump head will fit into tight areas where water removal is most challenging. The battery powered pump is capable of pumping 15 Gallons per minute.

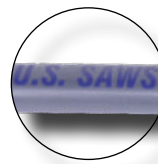
- Pump 15 gallons a minute
- Powered by a 20V DeWalt or 18V Milwaukee Battery
- Light-weight but big on power
- Durable PVC plastic construction



Battery Adapter Plate



Built in Screen to Block Debris



Durable PVC/ Plastic Construction



Flexible Discharge Hose



BP1520 - DEWALT

PART NUMBER: US27840

Power Source	20V DeWalt Battery (sold separately)
GPM	15
Length	4'
Weight	5 lbs



BP1520 - MILWAUKEE

PART NUMBER: US27844

Power Source	18V Milwaukee Battery (sold separately)
GPM	15
Length	4'
Weight	5 lbs

MAGNETIC LIFTING SYSTEMS



MAGNETIC LIFTING

U.S.SAWS Magnetic Lifting Systems are versatile tools that provide a safe way to lift utility covers.

- Dollies are collapsible for storage & transportation
- Dual-position lifting points to provide the power to break loose the most stubborn maintenance hole covers
- Eliminates the use of pry bars
- Moves utility hole covers up to 36 inches in diameter
- Uses rare neodymium magnets that won't wear out
- Reduces common injuries

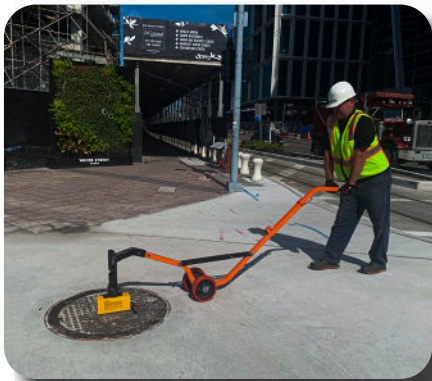


CURVED ALUMINUM HEAVY DUTY DOLLY WITH 8" HARD WHEELS

PART NO. US30185 (WITH HEAVY DUTY MAGNET)
PART NO. US30186 (WITH SUPREME DUTY MAGNET)

Aluminum Heavy Duty Collapsible Dolly with 8" Hard Wheels, Heavy Duty Magnet or Supreme Duty Magnet

36" x 12 1/2" x 11-5/8" (Folded Dimension)



CURVED STEEL HEAVY DUTY DOLLY WITH 8" HARD WHEELS

PART NO. US30550 (WITH HEAVY DUTY MAGNET)
PART NO. US30200 (WITH MEGA DUTY MAGNET)

Curved Heavy Duty Collapsible Steel Dolly with 8" Hard Wheels, Heavy Duty Magnet or Mega Duty Magnet

36" x 12 1/2" x 11-5/8" (Folded Dimension)



SUPREME HEAVY DUTY DOLLY WITH 10" HARD WHEELS AND EXTENSION HANDLES

PART NO. US30160 (WITH SUPREME DUTY MAGNET)
PART NO. US30170 (WITH MEGA DUTY MAGNET)

Supreme Heavy Duty Dolly with 10" Hard Wheels, Extension Handles, Supreme Duty Magnet or Mega Duty Magnet

48.5" x 16" x 11.5" (Folded Dimension)

MAGNETIC LIFTING SYSTEMS

MAGNETS & ACCESSORIES FOR MAGNETIC LIFTING DOLLIES



HEAVY DUTY MAGNET

300 lbs*

PN: US30330

Holding Value (Flat/Round)
660 lbs/330lbs



10" PUNCTURE PROOF WHEEL KIT

PART NO. US30050

Provides increased footprint for use on soft ground



SUPREME DUTY MAGNET

600lbs*

PN: US30450

Holding Value (Flat/Round)
900 lbs/450lbs



LIFTING ARM EXTENSION

PART NO. US30117

Provides increased lifting reach for maintenance holes larger than 36"



MEGA DUTY MAGNET

900 lbs*

PN: US30660

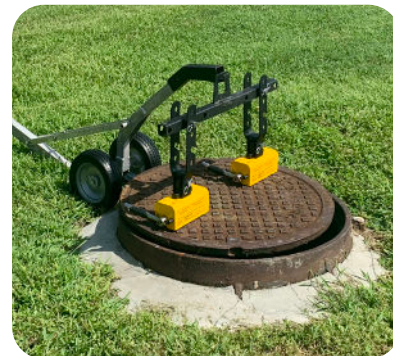
Holding Value (Flat/Round)
1320 lbs/660lbs



STORM GRATE LIFTING CHAIN

PART NO. US30055

Centering loop & 3 hooks for easy lifting & moving of rectangular storm grates



ADJUSTABLE SPREADER BAR

PART NO. US30261

Allows 2 magnets to be used with a dolly at the same time for greater stability & lifting force

HAND-HELD MAGNETIC LIFTING SYSTEMS



3 OR 4 MAGNET BREAK 'N TAKE LID LIFTER

PART NUMBER: US30178 (3 MAGNET)

PART NUMBER: US30188 (4 MAGNET)

Lifting Capacity	150 / 225 lbs
Magnets Used	3 / 4
Chassis	Orange
Weight	15 / 18 lbs
Base Dims	10" x 5"
Height	34"



5 MAGNET BREAK 'N TAKE LID LIFTER WITH CARRYING SHOE & EXTENDABLE UTILITY HANDLE

PART NUMBER: US30198

Lifting Capacity	350 lbs
Magnets Used	5
Chassis	Orange
Weight	26 lbs
Base Dims	16" x 7"
Height	34"
Handle Length	34" - 24"

HAND-HELD MAGNETIC LIFTING SYSTEMS



1. Attach



2. "Break"



3. Remove



4. Replace & Release



3 MAGNET ROBOTRON MAINTENANCE HOLE LID REMOVER

PART NUMBER: US30178RT

Lifting Capacity	250 lbs
Magnets Used	3
Chassis	Yellow
Weight	15 lbs
Base Dims	13" x 6"
Height	34"



4 MAGNET ROBOTRON MAINTENANCE HOLE LID REMOVER

PART NUMBER: US30188RT

Lifting Capacity	300 lbs
Magnets Used	4
Chassis	Yellow
Weight	18 lbs
Base Dims	16" x 7"
Height	34"



4 MAGNET UTILITY ROBOTRON MAINTENANCE HOLE LID REMOVER

PART NUMBER: US30188UTILITY

Lifting Capacity	325 lbs
Magnets Used	4
Chassis	Yellow
Weight	28 lbs
Base Dims	16" x 7"
Height	42"

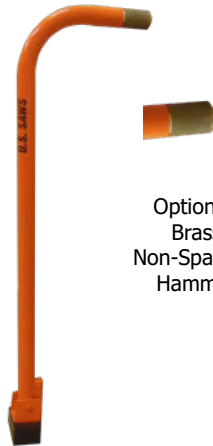
ROBOTRON UTILITY HANDLE

PART NO. US30184UTILITY

Provides increased leverage for magnetic maintenance hole lifters.



HAND-HELD MAGNETIC LIFTING SYSTEMS



Optional:
Brass
Non-Sparking
Hammer

BO BOP - 1 MAGNET

PART NUMBER: US30298

PART NUMBER: US30299 (NON-SPARKING)

Lifting Capacity 25 lbs
Magnets Used 1
Chassis Orange
Weight 4 lbs
Base Dims 4" x 2"
Unit Height 34"



TRENCH PLATE MOVER

PART NUMBER: US30297 (1 MAGNET)

PART NUMBER: US30293 (2 MAGNET)

Guide Capacity 50 / 150 lbs shear
Magnets Used 1 / 2
Chassis Orange
Weight 8 lbs
Base Dims 5" x 5"
Height 4'-7'

Fully Extended : 7 Feet of Reach!

Unit	Lifting Cap.	Mag. Used	Chassis	Unit Weight	Base Meas.	Unit Height	Part Number
Bo Bop	25 lbs	1	Orange	4 lbs	4" x 2"	34"	US30298
Non-Sparking Bo Bop	25 lbs	1	Orange	4 lbs	4" x 2"	34"	US30299
3 Magnet Break 'N Take	150 lbs	3	Orange	15 lbs	10" x 5"	34"	US30178
4 Magnet Break 'N Take	225 lbs	4	Orange	18 lbs	10" x 5"	34"	US30188
3 Magnet Robotron	250 lbs	3	Yellow	15 lbs	13" x 6"	34"	US30178RT
3 Magnet Utility Robotron	275 lbs	3	Orange	15 lbs	13" x 6"	42"	US30178UTILITY
4 Magnet Robotron	300 lbs	4	Yellow	18 lbs	16" x 7"	34"	US30188RT
4 Magnet Utility Robotron	325 lbs	4	Yellow	28 lbs	16" x 7"	34"-42"	US30188UTILITY
5 Magnet Break 'N Take	350 lbs	5	Orange	26 lbs	16" x 7"	34"	US30198

