

U.S.SAWS SAFETY YELLOW BO BOP MANUAL

Notice of Copyright Protection

Copyright 2020, by U.S.SAWS . All rights reserved. This work may not be reproduced or disseminated in whole or in part by any means without the prior written permission of U.S.SAWS

06-26-2022



INTRODUCTION & SPECIFICATIONS

1.0 INSTRUCTIONS FOR USE OF MANUAL SECTIONS

Section	Page
Table of Contents & Introduction	2
Symbols & Decals	3
Safety Instruction	4
Operation	5
Parts	6
Warranty & Service	7 - 8

Disclosure

By purchasing and using the Bo Bop, you agree to release U.S.SAWS of any and all liability. Under no circumstances will U.S.SAWS be held liable for incidental or consequential damages resulting from the use of this product and/or defective parts or products associated with this product.

- It is the responsibility of the owner/user to ensure that the operating instructions have been read and understood by the operator before the operation of the equipment begins.
- It is the responsibility of the owner/user to understand and perform the maintenance and storage procedures as explained in the operating instructions.

Foreword/Introduction

This manual outlines the maintenance and operation of the Bo Bop. This is a professional tool and is intended for use by trained and experienced operators. To get maximum benefit from your tool and to ensure maximum safety, be sure to read this manual thoroughly. You should also periodically review safety instructions. Keep all manuals provided with your equipment in a safe place at all times. The information and specifications included in this publication were in effect at the time of approval for printing. U.S.SAWS reserves the right, however, to discontinue or change specifications or design at any time without notice and without incurring any obligation. Our Magnetic Lifting Systems are versatile tools with the power to get the heavy lifting done while avoiding back injuries associated with lifting manhole covers.

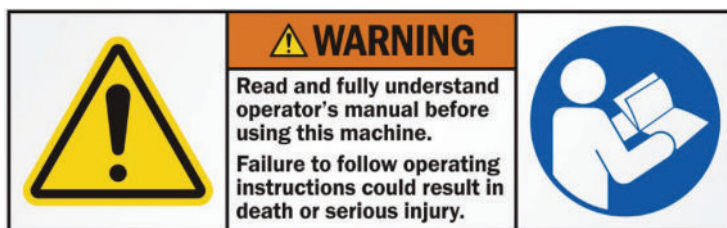
*25 lb Lifting Capacity

Features:

- Magnetically lifts valve boxes or electrical covers
- 25 lb lifting capacity
- Solid handle for easy pick up
- Safe and efficiently remove covers
- Magnetic field penetrates texture surfaces allowing the operator to lift lid
- Reduces finger and toe injuries

WARNING

- DO NOT modify this equipment as it will void warranty benefits.
- The Lifting capacity for this equipment, as shown in the specification 2.0 is based upon a clean flat steel iron surface. Manhole covers in general will be uneven and coated. For this reason, the magnets may not lift their full rated capacity.
- This equipment limits the height that the manhole cover or cover plate can be lifted for safety reasons. DO NOT attach this equipment to any form of device such as a crane or bachee. This types of cranes require additional safety features as specified by OSHA and other safety organizations.



2.0 SPECIFICATIONS

BO BOP	
Lifting Capacity	25 lbs
Magnets Used	1 Magnet
Aluminum Chassis	Safety Yellow
Unit Weight	8 lbs
Base Dimensions	4" x 2"
Part Number	US30398



SYMBOLS & DECALS

3.0 SYMBOLS & DECALS

For Safe Operation

You must be qualified for safe operation of the U.S.SAWS Bo Bop Lifting Devices machine. You must clearly understand the written instructions supplied by U.S.SAWS, be trained (including actual operation) & know the safety rules and regulations for the job site. It is a safety practice to point out & explain safety signs and practices to others & to make sure they understand the importance of following these instructions.

Be Safe

Human error is the result of many factors: carelessness, fatigue, sensory overload, preoccupation, unfamiliarity with the machine or attachments, drugs or alcohol, to name a few. You can avoid serious injury or death caused by these and other unsafe work practices. Be safe and never assume accidents cannot happen to you. For your safety and the safety of others, act safely and encourage your fellow workers to act safely as well.

Dangers, Warnings and Cautions.

The purpose of safety symbols and explanations are to attract your attention to possible hazards and how to avoid them. The safety symbols and explanations do not by themselves eliminate any danger. The instructions or warnings they give are not substitutes for proper accident prevention measures.



DANGER: Indicates an imminently hazardous situation that if not avoided, will result in death or serious injury. This signal word is limited to the most extreme situations.



WARNING: Indicates a potentially hazardous situation that, if not avoided, could result in death or serious injury.



CAUTION: Indicates a potentially hazardous situation that, if not avoided may result in minor or moderate injury. It may also be used to alert against unsafe practices that may cause property damage.



Read and understand operator's manual before using this machine. Failure to follow operating Instructions could result in injury or damage to equipment.



Wear appropriate clothing



Wear hand protection



Wear safety boots when operating this machine



Please be advised that in and around the application of magnetic equipment. Strong Magnetic Field Interaction with metallic objects may produce Pinch Hazards.



- Persons with medical implants KEEP BACK 36 inches during operations
- Can be harmful with pacemaker wearers

Individuals that has sensitive medical devices should use caution when they are around or handling magnets. For more information, the wearer should contact their physician.



Beware of pinch points from sudden attraction and unexpected movement between magnets and ferrous metal equipment components or tools.



SAFETY INSTRUCTIONS

4.0 SAFETY INSTRUCTIONS

4.1 KNOW THE RULES & YOUR EQUIPMENT.

Most job sites have rules governing equipment use and maintenance. Before starting at a new work location, check with the supervisor or safety coordinator. Ask about any rules or regulations you need to abide.

Use safe lifting practices when removing the lid to reduce muscle load or pressure on your back. At no time should the entire weight of the lid be suspended by the magnetic tool. The tool is designed to lift only the edge of a manhole cover so that the lid can be slid off the opening.

Do not operate this equipment unless you have read the operations and maintenance manual carefully.

4.2 RECEIVE PROPER TRAINING.

Do not operate this machine unless you have received operational and maintenance training from a U.S.SAWS representative or from an authorized distributor for U.S.SAWS.

4.3 PROTECT YOUR FEET.

Observe all applicable local, state and federal safety regulations. Wear OSHA approved foot protection.

4.4 PROTECT YOUR EYES.

Observe all applicable local, state and federal safety regulations. Wear OSHA approved safety glasses.

4.5 PROTECT YOUR HEARING.

Observe all applicable local, state and federal safety regulations. Wear OSHA approved hearing protection.

4.6 DRESS PROPERLY.

Do not wear loose clothing or jewelry that can be caught in moving parts. Wear protective hair covering to contain long hair. Keep hair away from motor air vent. Rubber gloves and non-skid footwear are recommended when working outdoors.

4.7 AVOID A DANGEROUS ENVIRONMENT.

Do not expose machine to rain. Do not use machine in wet conditions. Water entering a power tool will increase the risk of electric shock. Keep work area well lit.

4.8 AVOID ANY AREAS OR ACTIONS THAT EXPOSE YOU TO CARBON MONOXIDE.

Exhaust gas from gasoline engines contains dangerous carbon monoxide. Breathing it can cause unconsciousness and even kill you. Always operate gasoline engine machines in a well-ventilated area. Do not operate in areas where exhaust fumes could accumulate without wearing appropriate respiratory protection. Consult your employer and OSHA regarding use of appropriate respirator for dangerous carbon monoxide gases.

4.9 KEEP WORK AREA CLEAN. DO NOT RUN OVER ANYTHING.

Loose objects could be thrown from crack. Make sure area to be cut is clear from people and any loose objects, nuts, bolts, etc. Never run over any loose objects.

4.10 KEEP CHILDREN AND VISITORS AWAY.

Do not let children or visitors contact machine or extension cord. Keep children and visitors away from the work area.

4.11 DO NOT OVERREACH.

Keep proper footing and balance at all times.

4.12 MAINTAIN EQUIPMENT WITH CARE.

Keep machine clean and follow maintenance procedures for better and safer performance. Keep handles dry, clean, and free from oil and grease. Follow instructions for lubricating and changing accessories.

4.13 REMOVE ADJUSTING TOOLS.

Form a habit of checking to see that tools such as adjusting wrenches are removed from the machine and properly stored before starting the engine.

4.14 STAY ALERT.

Watch what you are doing. Use common sense. Do not operate machine when you are tired or fatigued.

4.15 DO NOT USE DRUGS, ALCOHOL, MEDICATION.

Do not operate machine while under the influence of drugs, alcohol, or any medication.

4.16 KEEP THE RIGHT PARTS IN THE RIGHT POSITIONS.

Do not operate machine with parts missing or improperly mounted.

4.17 CHECK DAMAGED PARTS.

Verify all machine guards are in good condition and will function properly before using the machine. Check for alignment of moving parts, binding of moving parts, breakage of parts, mounting, and any other conditions that may affect machine operation. A guard, power switch or other part that is damaged should be properly repaired or replaced by an authorized service center unless indicated elsewhere in this instruction manual. Do not operate machine if lever or engine on/off switch does not function properly.

4.18 WHEN REPLACING A PART, USE THE SAME TYPE AND QUALITY.

When replacing a component part with a new one, use only the same type and quality of new part. Never attempt to repair a machine if you are unfamiliar with proper procedures and techniques required.

4.19 LOAD AND UNLOAD SAFELY.

Use proper heavy lifting procedures. Read & understand manuals before loading & unloading.

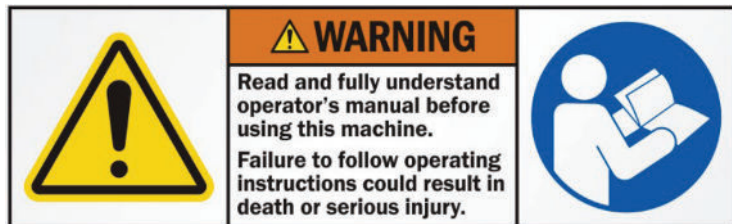
4.20 SAVE THESE INSTRUCTIONS.

Refer to this operations and maintenance manual as well as any additional instructions included from other manufacturers and organizations such as Honda® and the Masonry and Concrete Saw Manufacturers Institute®. Never permit anyone to operate the machine without proper instructions.



OPERATION

5.0 OPERATION CHECKLIST



Warning label - read and understand manual



Beware of pinch points from sudden attraction and unexpected movement between magnets and ferrous metal equipment components or tools.



DANGER: If you use a pacemaker or similar device, you must never approach the equipment because your device may malfunction in the magnetic field with consequence up to and including death.



WARNING: The magnets used on the Bo Bop tool are neodymium or rare earth magnets. They are among the strongest magnets available and exert enormous force. The energy in these magnets cannot be seen or felt by a person or on nonmetallic objects; however, caution should be taken around these tools. Use caution around credit cards, electronic devices, and metal objects.



- Persons with medical implants KEEP BACK 36 inches during operations
- Can be harmful with pacemaker wearers



CAUTION: If sharp tugging motions are used during the removal process, the magnets may release without warning. Use a safe stance/body position to ensure you do not fall backward if the magnets do release.

5.1 BO BOP OPERATION

5.1.1 Step 1

If needed, strike the center of the water or valve box lid with the solid metal end of the Bo Bop

5.1.2 Step 2

Place magnet on center of water or valve box lid

5.1.3 Step 3

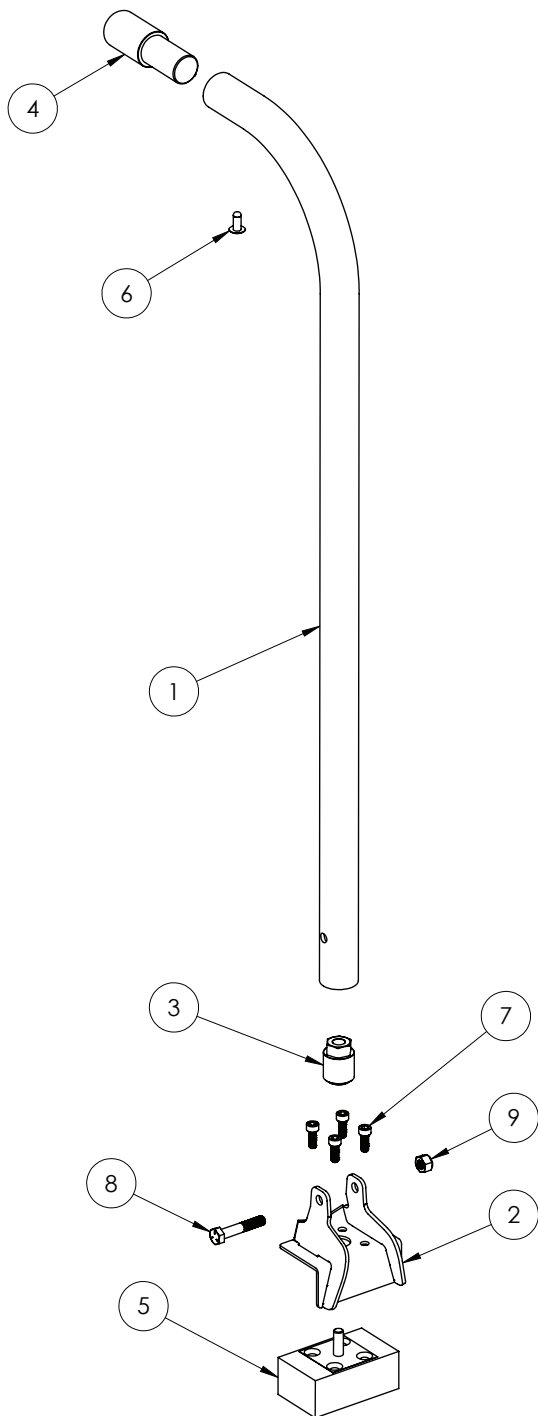
Pick unit straight up & replace lid

5.1.4 Step 4

Twist and push unit forward to release from lid



PARTS BREAK DOWN



Item No.	Part Number	Description	QTY.
1	US30380	Bo Bop arm	1
2	US30382	Bo Bop Chassis - Stainless Steel	1
3	US30383	Bo Bop magnet nut	1
4	US30384	Bo Bop Hammer Head - Steel	1
5	US30100	Magnet - Break n' Take	1
6	US31314	1/4" x 1/2" steel rivet	1
7	US31262	M6x1mm x 16mm long stainless steel socket head screw	4
8	US31105-7	5/16-18 x 1-3/4" hex head screw	1
9	US31110-1	5/16-18 Nylon lock nut	1



WARRANTY AND SERVICE

10.0 WARRANTY AND SERVICE

10.1.1 Warranty

This document is to be used as a guide in determining warranty policies and procedures for U.S.SAWS and its U.S.SAWS products. It is to be used in determining whether a warranty is justified and as a procedural guide in completing a U.S.SAWS warranty claim form.

10.1.2 Warranty Responsibility

The distributor or the end user must prepare a Machine Warranty Information Card when the machine is delivered. Failure to comply will make any and all warranties on this equipment null and void. Credit for warranty repairs will be given only after receipt of the WARRANTY CLAIM FORM, properly completed with all the required details. Submittal details are described later in this document.

10.1.3 Warranty Policy

10.1.3.1 U.S.SAWS warrants its U.S.SAWS products against defects in material and workmanship under normal and proper use for a period of one year (365) days from the date of delivery; in the case of Rental Fleet Machines, date of assignment to Rental Fleet. Such warranty is extended only to the buyer who purchases the equipment directly from U.S.SAWS or its authorized distributor. This warranty does not include expendable parts such as, but not limited to, plugs, cutters, blades, blast wheel, wear parts, liners and seals.

10.1.3.2 The obligation under this warranty is strictly limited to the replacement or repair, at US SAWS's option, of machines and does not include the cost of transportation, loss of operating time, or normal maintenance services.

10.1.3.3 This warranty does not apply to failure occurring as a result of abuse, misuse, negligence, corrosion, erosion, normal wear and tear, alterations or modifications made to the machine without express written consent of U.S.SAWS .

10.1.3.4 Warranty request must be submitted in writing within thirty (30) days after failure.

10.1.3.5 Written authorization to return merchandise under warranty must first be obtained from U.S.SAWS .

10.1.3.6 U.S.SAWS reserves the right to inspect and make the final decision on any merchandise returned under warranty.

10.1.3.7 U.S.SAWS offers no warranty with respect to accessories, including but not limited to, engines, motors, batteries, electrical boards, tires and any other parts not manufactured by us but which the original manufacturer warrants.

10.1.3.8 U.S.SAWS reserves the right to make product changes or improvements without prior notice and without imposing any obligation upon itself to install the same on its products previously sold.

10.1.3.9 The above warranty conditions can only be altered by US SAWS. US SAWS must confirm alterations in writing for each specific transaction.

10.1.3.10 U.S.SAWS reserves the right to establish specific warranty terms for used or demo machines on an individual transaction basis. Invoices covering such merchandise will clearly state the provisions of the applicable warranty for each specific transaction.

10.1.3.11 WE DO NOT AUTHORIZE ANY PERSON, REPRESENTATIVE OR SERVICE OR SALES ORGANIZATION TO MAKE ANY OTHER WARRANTY OR TO ASSUME FOR US ANY LIABILITY IN CONNECTION WITH THE SALE OF OUR PRODUCTS OTHER THAN THOSE CONTAINED HEREIN.

10.1.3.12 UNDER NO CIRCUMSTANCES SHALL US SAWS BE LIABLE TO CUSTOMER OR ANY OTHER PERSON FOR ANY DIRECT, INCIDENTAL, OR CONSEQUENTIAL DAMAGES RESULTING FROM THE USE OF THE PRODUCT OR ARISING OUT OF ANY BREACH OF ANY WARRANTY OR FOR ANY SPECIAL OR CONSEQUENTIAL DAMAGES OF ANY CHARACTER, INCLUDING WITHOUT LIMITATIONS, DAMAGES FOR ANY LOSS OF GOODWILL, WORK STOPPAGE, OR ANY AND ALL OTHER COMMERCIAL DAMAGES OR LOSSES.

10.1.3.13 U.S.SAWS MAKES NO OTHER WARRANTIES, EXPRESSED OR IMPLIED, INCLUDING, BUT NOT LIMITED TO, THE IMPLIED WARRANTIES OF MERCHANTABILITY AND FITNESS FOR A PARTICULAR PURPOSE WITH RESPECT TO THE US SAWS PRODUCTS SOLD PURSUANT THERETO.



MACHINE WARRANTY INFORMATION CARD

TO ENSURE THE PROPER WARRANTY COVERAGE IS EXTENDED TO THE OWNER OF THIS MACHINE, FILL OUT THE ATTACHED CARD COMPLETELY AND ACCURATELY.

WARRANTY REGISTRATION CARD

IMPORTANT! To ensure that your U.S.SAWS machine is covered under warranty, please fill in the following information and mail or fax it to U.S.SAWS, 8004B E. Broadway Ave. Tampa, FL 33619, Fax No. 714-434-7299

COMPANY
NAME
ADDRESS
INTENDED USE
DATE OF PURCHASE
INTENDED USE
SERIAL NUMBER

If you are not the owner of record as shown on the manual copy of the warranty registration card, do not operate this machine before contacting U.S.SAWS at 1-866-987-7297 Verify the following before operating the equipment:

CHANGE OF OWNER OR NEW ADDRESS REGISTRATION CARD

IMPORTANT! To ensure that your U.S.SAWS machine is covered under warranty, please fill in the following information and mail or fax it to U.S. SAWS, 8004B E. Broadway Ave. Tampa, FL 33619, Fax No. 714-434-7299

COMPANY
NAME
ADDRESS
INTENDED USE
DATE OF PURCHASE
INTENDED USE
SERIAL NUMBER

