

U.S.SAWS™

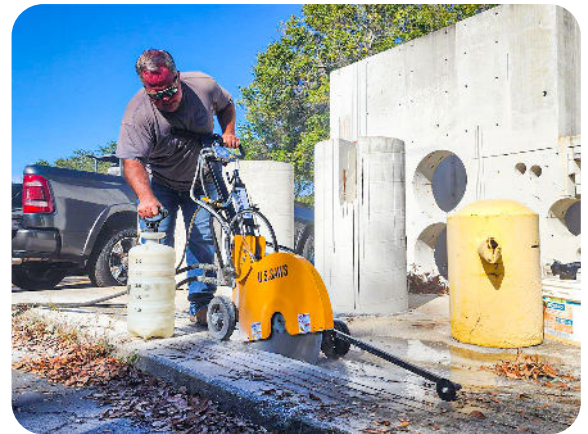
FSB-150H WALK BEHIND SAW



U.S.SAWS FSB 150H Hydraulic Walk Behind Saw is perfect for concrete and asphalt cutting applications where large saws cannot be used. The heavy-duty frame design reduces vibration for a fast, accurate cutting. The compact size makes transportation easy because the tool has no exhaust fumes. It is ideal for use with interior applications, trench cutting, and restoration.

Features:

- Cuts to 7.5 inches deep
- 1/2" flush face quick connect hydraulic fittings
- No belt to slip
- Weight precisely balanced eliminating rocking of saw
- Lightweight and reliable
- Fume free so can be used safely in confined spaces
- Able to operate in water
- Use with blades up to 20 inches in diameter



Model	FSB-150H
Power Source	Hydraulic
Horsepower	12 GPM / 2500 PSI
RPM	3,300
Max Cutting Depth	7.5"
Diameter Blades Used	20" Maximum - Flush Cut
Weight	144 lbs
Part Number	US60050-H

