



# U.S. SAWS™

BUILT FOR PROFESSIONALS

## MAGNETIC LIFTING PRODUCT CATALOG

1-866-987-7297 | [www.USSAWS.com](http://www.USSAWS.com) | [sales@ussaws.com](mailto:sales@ussaws.com)



U.S.SAWS Magnetic Lifting Systems are versatile tools that provide a safe way to lift utility covers.

- Dollies are collapsible for storage & transportation
- Dual-position lifting points to provide the power to break loose the most stubborn maintenance hole covers
- Eliminates the use of pry bars
- Moves utility hole covers up to 36 inches in diameter
- Uses rare neodymium magnets that won't wear out
- Reduces common injuries



### **CURVED ALUMINUM HEAVY DUTY DOLLY WITH 8" HARD WHEELS**

**PART NO. US30180 (DOLLY ONLY)**

**PART NO. US30181 (DOLLY WITH SOFT WHEELS)**

**PART NO. US30185 (WITH HEAVY DUTY MAGNET)**

*Recommended for covers up to 300 lbs*

**PART NO. US30186 (WITH SUPREME DUTY MAGNET)**

*Recommended for covers up to 600 lbs*

Aluminum Heavy Duty Collapsible Dolly with 8" Hard or Soft Wheels, Heavy Duty Magnet or Supreme Duty Magnet

36" x 12 1/2" x 11-5/8" (Folded Dimension)



### **CURVED STEEL HEAVY DUTY DOLLY WITH 8" HARD WHEELS**

**PART NO. US30500 (DOLLY ONLY)**

**PART NO. US30501 (DOLLY WITH SOFT WHEELS)**

**PART NO. US30550 (WITH HEAVY DUTY MAGNET)**

*Recommended for covers up to 300 lbs*

**PART NO. US30200 (WITH MEGA DUTY MAGNET)**

*Recommended for covers up to 900 lbs*

Curved Heavy Duty Collapsible Steel Dolly with 8" Hard or Soft Wheels, Heavy Duty Magnet or Mega Duty Magnet

36" x 12 1/2" x 11-5/8" (Folded Dimension)



### **SUPREME HEAVY DUTY DOLLY WITH 10" HARD WHEELS**

**PART NO. US30115 (DOLLY ONLY)**

**PART NO. US30116 (DOLLY WITH SOFT WHEELS)**

**PART NO. US30160 (WITH SUPREME DUTY MAGNET)**

*Recommended for covers up to 600 lbs*

**PART NO. US30170 (WITH MEGA DUTY MAGNET)**

*Recommended for covers up to 900 lbs*

Supreme Heavy Duty Dolly with 10" Hard or Soft Wheels, Extension Handles, Supreme Duty Magnet or Mega Duty Magnet

48.5" x 16" x 11.5" (Folded Dimension)

# HAND - HELD MAGNETIC LIFTING:

## FEATURES:

- Uses rare neodymium magnets that won't wear out
- Impact protection guards around the magnets
- Durable aluminium handle assemblies
- Storage base protects magnets during transportation
- Small enough to fit in any truck
- Affordable, durable, and portable



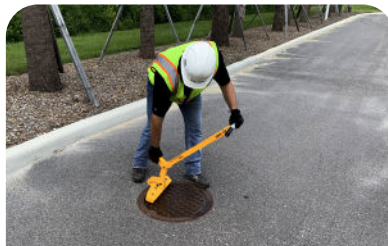
1. ATTACH



2. BREAK



3. REMOVE



4. REPLACE & RELEASE



**3 OR 4 MAGNET ROBOTRON**  
 PART NO. US30178RT (3 MAGNET)  
 PART NO. US30188RT (4 MAGNET)

Lifting Capacity	250 lbs/ 300 lbs
Magnets Used	3 Magnet/ 4 Magnet
Aluminium Chassis	Yellow
Unit Weight	14 lbs/ 16 lbs
Base Dimensions	13" x 6"/ 16" x 7"
Unit Height	34"



**4 MAGNET UTILITY ROBOTRON**  
 PART NO. US30188UTILITY

Lifting Capacity	325 lbs
Magnets Used	4 Magnet
Aluminium Chassis	Yellow
Unit Weight	28 lbs
Base Dimensions	16" x 7"
Unit Height	42"



**3 MAGNET BREAK N'TAKE**  
 PART NO. US30178

Lifting Capacity	150 lbs
Magnets Used	3 Magnet
Aluminium Chassis	Orange
Unit Weight	15 lbs
Base Dimensions	10" x 5"
Unit Height	34"



**4 MAGNET BREAK N'TAKE**  
 PART NO. US30188

Lifting Capacity	225 lbs
Magnets Used	4 Magnet
Aluminium Chassis	Orange
Unit Weight	18 lbs
Base Dimensions	10" x 5"
Unit Height	34"



**BO BOP VALVE BOX LIFTER**  
 PART NO. US30398  
 PART NO. US30299 (NON-SPARKING)

Lifting Capacity	25 lbs
Magnets Used	1 Magnet
Aluminium Chassis	Yellow
Unit Weight	4 lbs
Base Dimensions	4" x 2"
Unit Height	34"



**TRENCH PLATE MOVER**  
 PART NO. US30297 (1 MAGNET)  
 PART NO. US30293 (2 MAGNET)

Guide Capacity	50/150 lbs shear
Magnets Used	1 Magnet/ 2 Magnet
Aluminium Chassis	Orange
Unit Weight	8 lbs
Base Dimensions	5" x 5"
Unit Height	4" - 7"





## FEATURED ACCESSORIES:

### HEAVY DUTY MAGNET



**300 lbs\***  
Holding Value (Flat/Round)  
660 lbs/330lbs

PART NUMBER: US30330

### SUPREME DUTY MAGNET



**600 lbs\***  
Holding Value (Flat/Round)  
900 lbs/450lbs

PART NUMBER: US30450

### MEGA DUTY MAGNET



**900 lbs\***  
Holding Value (Flat/Round)  
1320 lbs/660lbs

PART NUMBER: US30660

### REPLACEMENT HANDLE



Replacement handle for the heavy duty  
and supreme duty magnet

PART NUMBER: US30334CH

### REPLACEMENT HANDLE



Replacement handle for the mega duty  
magnet

PART NUMBER: US30664CH

### LIFTING ARM EXTENSION



Provides increased lifting leverage for  
manholes larger than 36"

PART NUMBER: US30128

### 10" SEMI-PNEUMATIC SOFT WHEEL KIT



Provides increased footprint for use on soft  
ground  
*(Not for use on aluminium dolly)*

PART NUMBER: US30050

### ADJUSTABLE SPREADER BAR



Allows 2 magnets to be used with a dolly at  
the same time for greater stability & lifting  
force

PART NUMBER: US30261

### ROBOTRON UTILITY HANDLE



Provides increased leverage for magnetic  
maintenance hole lifters.

PART NUMBER: US30184UTILITY

### STORM GRATE LIFTING CHAIN



Center loop & 3 hooks for easy  
lifting & moving of rectangular storm gates

PART NUMBER: US30055

# U.S. SAWS™

## WATER WORKS DIVISION

P: 866-987-7297 F: 813-621-7125  
Visit us at [www.ussaws.com](http://www.ussaws.com)  
[sales@ussaws.com](mailto:sales@ussaws.com)

