



U.S. SAWS™

BUILT FOR PROFESSIONALS

MAGNETIC LIFTING PRODUCT CATALOG

1-866-987-7297 | www.USSAWS.com | sales@ussaws.com

U.S.SAWS MAGNETIC MANHOLE LIFTING LINE



U.S.SAWS Magnetic Lifting Systems are versatile tools that provide a safe way to lift utility covers.

- Dollies are collapsible for storage & transportation
- Dual-position lifting points to provide the power to break loose the most stubborn maintenance hole covers
- Eliminates the use of pry bars
- Moves utility hole covers up to 36 inches in diameter
- Uses rare neodymium magnets that won't wear out
- Reduces common injuries



CURVED ALUMINUM HEAVY DUTY DOLLY WITH 8" HARD WHEELS

PART NO. US30180 (DOLLY ONLY)

PART NO. US30181 (DOLLY WITH SOFT WHEELS)

PART NO. US30185 (WITH HEAVY DUTY MAGNET)

Recommended for covers up to 300 lbs

PART NO. US30186 (WITH SUPREME DUTY MAGNET)

Recommended for covers up to 600 lbs

Aluminum Heavy Duty Collapsible Dolly with 8" Hard or Soft Wheels, Heavy Duty Magnet or Supreme Duty Magnet

36" x 12 1/2" x 11-5/8" (Folded Dimension)



CURVED STEEL HEAVY DUTY DOLLY WITH 8" HARD WHEELS

PART NO. US30500 (DOLLY ONLY)

PART NO. US30501 (DOLLY WITH SOFT WHEELS)

PART NO. US30550 (WITH HEAVY DUTY MAGNET)

Recommended for covers up to 300 lbs

PART NO. US30200 (WITH MEGA DUTY MAGNET)

Recommended for covers up to 900 lbs

Curved Heavy Duty Collapsible Steel Dolly with 8" Hard or Soft Wheels, Heavy Duty Magnet or Mega Duty Magnet

36" x 12 1/2" x 11-5/8" (Folded Dimension)



SUPREME HEAVY DUTY DOLLY WITH 10" HARD WHEELS

PART NO. US30115 (DOLLY ONLY)

PART NO. US30116 (DOLLY WITH SOFT WHEELS)

PART NO. US30160 (WITH SUPREME DUTY MAGNET)

Recommended for covers up to 600 lbs

PART NO. US30170 (WITH MEGA DUTY MAGNET)

Recommended for covers up to 900 lbs

Supreme Heavy Duty Dolly with 10" Hard or Soft Wheels, Extension Handles, Supreme Duty Magnet or Mega Duty Magnet

48.5" x 16" x 11.5" (Folded Dimension)



HAND - HELD MAGNETIC LIFTING:

FEATURES:

- Uses rare neodymium magnets that won't wear out
- Impact protection guards around the magnets
- Durable aluminium handle assemblies
- Storage base protects magnets during transportation
- Small enough to fit in any truck
- Affordable, durable, and portable



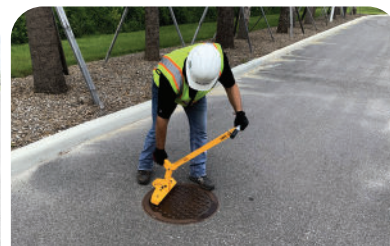
1. ATTACH



2. BREAK



3. REMOVE



4. REPLACE & RELEASE



3 OR 4 MAGNET ROBOTRON
PART NO. US30178RT (3 MAGNET)
PART NO. US30188RT (4 MAGNET)

Lifting Capacity	250 lbs/ 300 lbs
Magnets Used	3 Magnet/ 4 Magnet
Aluminium Chassis	Yellow
Unit Weight	15 lbs/ 18 lbs
Base Dimensions	13" x 6"/ 16" x 7"
Unit Height	34"



4 MAGNET UTILITY ROBOTRON
PART NO. US30188UTILITY

Lifting Capacity	325 lbs
Magnets Used	4 Magnet
Aluminium Chassis	Yellow
Unit Weight	22 lbs
Base Dimensions	16" x 7"
Unit Height	42"



3 MAGNET BREAK N'TAKE
PART NO. US30178

Lifting Capacity	150 lbs
Magnets Used	3 Magnet
Aluminium Chassis	Orange
Unit Weight	15 lbs
Base Dimensions	10" x 5"
Unit Height	34"



4 MAGNET BREAK N'TAKE
PART NO. US30188

Lifting Capacity	225 lbs
Magnets Used	4 Magnet
Aluminium Chassis	Orange
Unit Weight	17 lbs
Base Dimensions	10" x 5"
Unit Height	34"



BO BOP VALVE BOX LIFTER
PART NO. US30398
PART NO. US30299 (NON-SPARKING)

Lifting Capacity	25 lbs
Magnets Used	1 Magnet
Aluminium Chassis	Yellow
Unit Weight	4 lbs
Base Dimensions	4" x 2"
Unit Height	34"



TRENCH PLATE MOVER
PART NO. US30297 (1 MAGNET)
PART NO. US30293 (2 MAGNET)

Guide Capacity	50/150 lbs shear
Magnets Used	1 Magnet/ 2 Magnet
Aluminium Chassis	Orange
Unit Weight	8 lbs
Base Dimensions	5" x 5"
Unit Height	4" - 7"



FEATURED ACCESSORIES:

HEAVY DUTY MAGNET



300 lbs*
Holding Value (Flat/Round)
660 lbs/330lbs

PART NUMBER: US30330

SUPREME DUTY MAGNET



600 lbs*
Holding Value (Flat/Round)
900 lbs/450lbs

PART NUMBER: US30450

MEGA DUTY MAGNET



900 lbs*
Holding Value (Flat/Round)
1320 lbs/660lbs

PART NUMBER: US30660

REPLACEMENT HANDLE



Replacement handle for the heavy duty
and supreme duty magnet

PART NUMBER: US30334CH

REPLACEMENT HANDLE



Replacement handle for the mega duty
magnet

PART NUMBER: US30664CH

LIFTING ARM EXTENSION



Provides increased lifting leverage for
manholes larger than 36"

PART NUMBER: US30128

10" PUNCTURE PROOF WHEEL



The 10" puncture proof wheel increases foot
print for use on soft ground.

PART NUMBER: US30045

ADJUSTABLE SPREADER BAR



Allows 2 magnets to be used with a dolly at
the same time for greater stability & lifting
force

PART NUMBER: US30261

ROBOTRON UTILITY HANDLE



Provides increased leverage for magnetic
maintenance hole lifters.

PART NUMBER: US30184UTILITY

STORM GRATE LIFTING CHAIN



Center loop & 3 hooks for easy
lifting & moving of rectangular storm gates

PART NUMBER: US30055

U.S.SAWS™

**WATER WORKS
DIVISION**

P: 866-987- 7297 F: 813-621-7125
Visit us at www.ussaws.com
sales@ussaws.com

